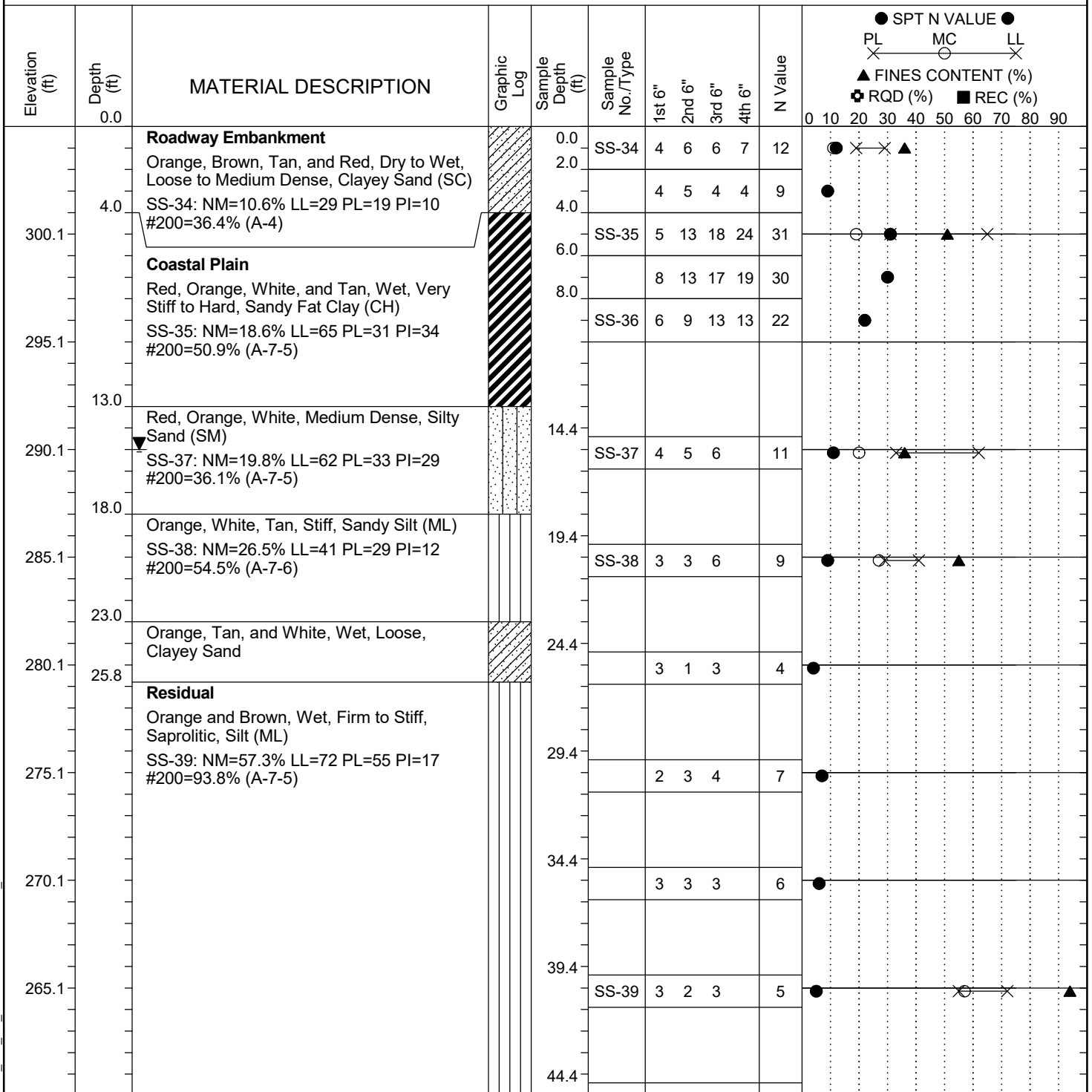


Project ID:	P039719	County:	Richland	Boring No.:	G-106
Site Description:	Carolina Crossroads Phase 2			Route:	Ramp
Eng./Geo.:	C. McIlroy	Boring Location:	394+91	Offset:	56 LT
Elev.:	305.1 ft	Latitude:	34.03923042	Longitude:	-81.09636541
Total Depth:	69.9 ft	Soil Depth:	69.9 ft	Date Started:	4/28/2022
Core Depth:	N/A ft	Date Completed:	4/28/2022	Alignment:	RAMPF
Bore Hole Diameter (in):	2.25	Sampler Configuration		Liner Required:	Y (N)
Drill Machine:	D-50 #439	Drill Method:	RW	Liner Used:	Y (N)
Hammer Type:	Automatic	Energy Ratio:	90.8%		
Core Size:	N/A	Driller:	R. Cassell	Groundwater:	TOB N/A
		24HR	15 ft		



LEGEND

Continued Next Page

SC_DOT_20-01_CCR2_ICE_BH_MERGED.GPJ SCDOT_DATATEMPLATE.GDT 5/23/22

SAMPLER TYPE		DRILLING METHOD	
SS - Split Spoon	NQ - Rock Core, 1-7/8"	HSA - Hollow Stem Auger	RW - Rotary Wash
UD - Undisturbed Sample	CU - Cuttings	CFA - Continuous Flight Augers	RC - Rock Core
AWG - Rock Core, 1-1/8"	CT - Continuous Tube	DC - Driving Casing	